



REAL-TIME OPERATIONS CENTER

Monitor Critical Operations at Sea (RPAS)

www.maritime-intelligence.fr

REAL-TIME OPERATIONS CENTER

Remote and secure web-user interface
to monitor critical RPAS and UAS activities at sea



This web-based interface enables real-time tracking and post mission analyses (replay).

KEY FIGURES

1

UNIQUE
STANAG FORMAT

5

LIVE FLIGHT
CAPABILITIES

20

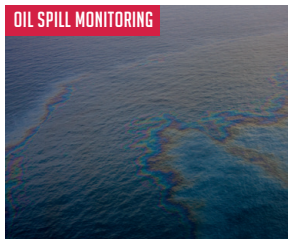
USERS CONNECTED
AT THE SAME TIME

ACTIONABLE INTELLIGENCE

For Maritime Surveillance

FOR ALL YOUR SURVEILLANCE NEEDS

OIL SPILL MONITORING



SEARCH & RESCUE



BORDER CONTROL



DETECT ILLEGAL TRAFFIC



FIGHT ILLEGAL FISHING



MONITORING OF SHIP EMISSIONS



SERVICES



MULTI-SOURCE DATA

SSAS - AIS - SAT-AIS - LRIT
VMS OPTICAL & RADAR IMAGERY
RPAS - SHIP REGISTRY
MARINE ENVIRONMENT



DATA PROCESSING ANALYSIS & FUSION

MODELING - BIG DATA -
ANALYTICS



DECISION MAKING

PLATFORM - DATA
PROCESSING
ANALYSIS & FUSION -
MODELING -
BIG DATA - ANALYTICS

KEY FIGURES

700

EMPLOYEES

24/7

OPERATIONS CENTER

130

SATELLITES USED



European Maritime Safety Agency

CONTEXT

In support of multipurpose maritime monitoring and surveillance operations, EMSA has been developing RPAS services to support authorities involved in Coast Guard functions in their daily missions of marine pollution monitoring, anti-smuggling operations, search and rescue operation and IUU operations.

BENEFITS

Improve RPAS video and image rendering through image processing modules: stabilization, improved resolution and contrast, stitching and mosaicking. Make available to various users the observations through a user-friendly, highly responsive web portal, designed for fixed or nomad use. All images and sensor feeds are available in realtime and can be replayed offline for further analysis. Ensure the fusion of the RPAS image feed into a marine chart context. External contextual information can also be integrated, such as AIS tracks. Support a chat between your team and RPAS operators during flight operations. Receive and archive all reports issued from the RPAS operations performed by third parties.

REGION/COUNTRY

European Waters

CHALLENGE

CLS' RPAS DC was designed to meet stringent EMSA requirements: it is the unique place where all data missions will be stored, processed and made accessible to EMSA end-users. In that respect, the capability (in terms of data processing performance, fusion, enhancement and scalability) and reliability (security, storage, 24/7 availability and helpdesk) of this Data Center are essential to ensure successful missions.

